



www.luckyyoufoundus.com



913.221.8383

The communication with Shamrock has been outstanding. They're always quick to reply and make sure we get the answers we need right away.

Ryan Hoagland
Director of Information Technology
Red Coats Inc.

MORE THAN LUCK >>>

You're about to start a new phase of your content management strategy with Lexmark enterprise software (formerly Perceptive Content and ImageNow), but you're concerned about getting all of those documents from your legacy system into the repository.

Or maybe you've been enjoying the benefits of Lexmark enterprise software for a while, but find moving content between production and test environments to be a real hassle. Either way, you're lucky you found Shamrock Solutions.

Our team of experts has been developing custom solutions and performing professional services for Lexmark enterprise software users for years, and now we've come up with something new for data migration.

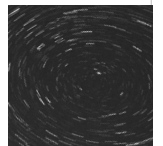
MOVING DATA IN + OUT OF LEXMARK SOFTWARE >>>

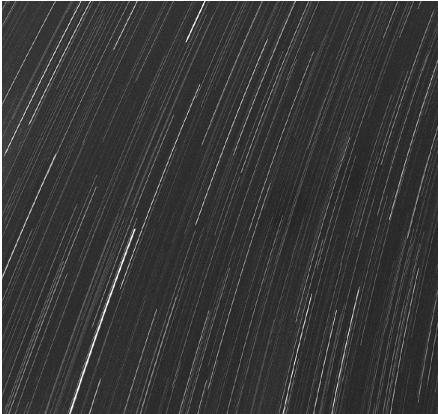
Transfer content between production and test environments and import and convert documents from legacy imaging systems

With our data migration solution, you can move data in and out of Lexmark enterprise software environments with unmatched ease, speed and accuracy — without disrupting users' experience. Like our other offerings, we developed this unique tool in response to our customers' requests and we're not ashamed to say that it's getting rave reviews.

Shamrock's data migration solution is empowering organizations like yours to:

- Move documents and accompanying data between production and test environments
- Reduce storage space costs and requirements by migrating data without needing to mirror your production environment
- Speed large-volume importing and conversion of documents from legacy document imaging and management systems
- Validate and test content before going live with an upgrade, e-forms deployment or capture implementation
- Transfer annotations, custom properties and other document elements that other tools don't support
- Purge duplicate data that's no longer needed
- Avoid the wasted time and errors of manual data entry





A BETTER WAY >>>

In addition to data migration, we provide a broad range of offerings that can help you squeeze every ounce of potential, capability and value out of your Lexmark enterprise software products.

Our consultants, project managers and process experts have years of experience delivering custom solutions and professional services for Lexmark enterprise software customers.

We're fast, versatile and cost-effective. Whether you want to upgrade to the latest version; add functionality such as e-forms, retention policy management and license utilization; or move to a secure hosted environment — you're lucky you found us.

CUSTOM SOLUTIONS >>>

AP SmartForm

Quickly design, customize and publish financials forms with this convenient, out-of-the-box solution that removes the hassle of starting from scratch with each form and enables you to eliminate the costs and delays of paper-based documents.

Hosted Solution

Reduce the burden on IT and boost your disaster plan by hosting your Lexmark environment in our data center. Benefit from continuous uptime, secure data protection and redundant backup while avoiding the overhead of buying and maintaining servers.

Back File Scanning

Need to protect a large volume of historical documents to meet your organization's retention and compliance needs? Our solution gets your legacy content into the secure electronic repository faster than any other available option. And because we understand Lexmark file structures, it's usable from day one.

License Utilization

Get a bird's eye view of how many users are logged into and have used your Lexmark enterprise software, which departments and locations they're in, and how close you are to reaching your user limit.

Retention Management Script

Retain only the documents you need in keeping with your company's retention policy and regulatory requirements. Purge content you're no longer required to keep to free up server space and reduce storage costs. You'll get all this and more for a one-off fee that's not tied to the number of users.

OSM Cleanup

Get rid of the unwanted OSM files that often remain even after you've deleted documents and create distinct OSM buckets for each business area so you can see each department's usage and storage. We also set up OSM rotation, so that only the content you need most often is retained in higher-cost, high-availability storage.



We need to move fast when it comes to our Perceptive solutions, and some vendors just can't work at the speed we require. In contrast, Shamrock jumps right into each project and is able to meet our needs by, or even before, our project deadlines.

Gordon Bone
Manager, BI Solutions
Ledcor

